

Standard depth of teeth-profile

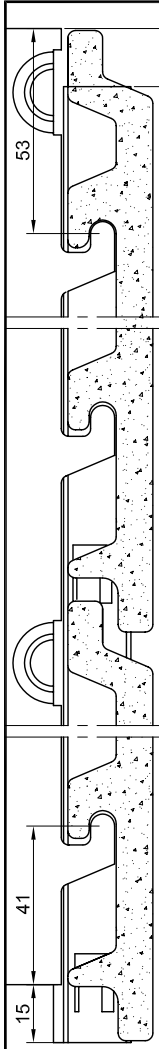
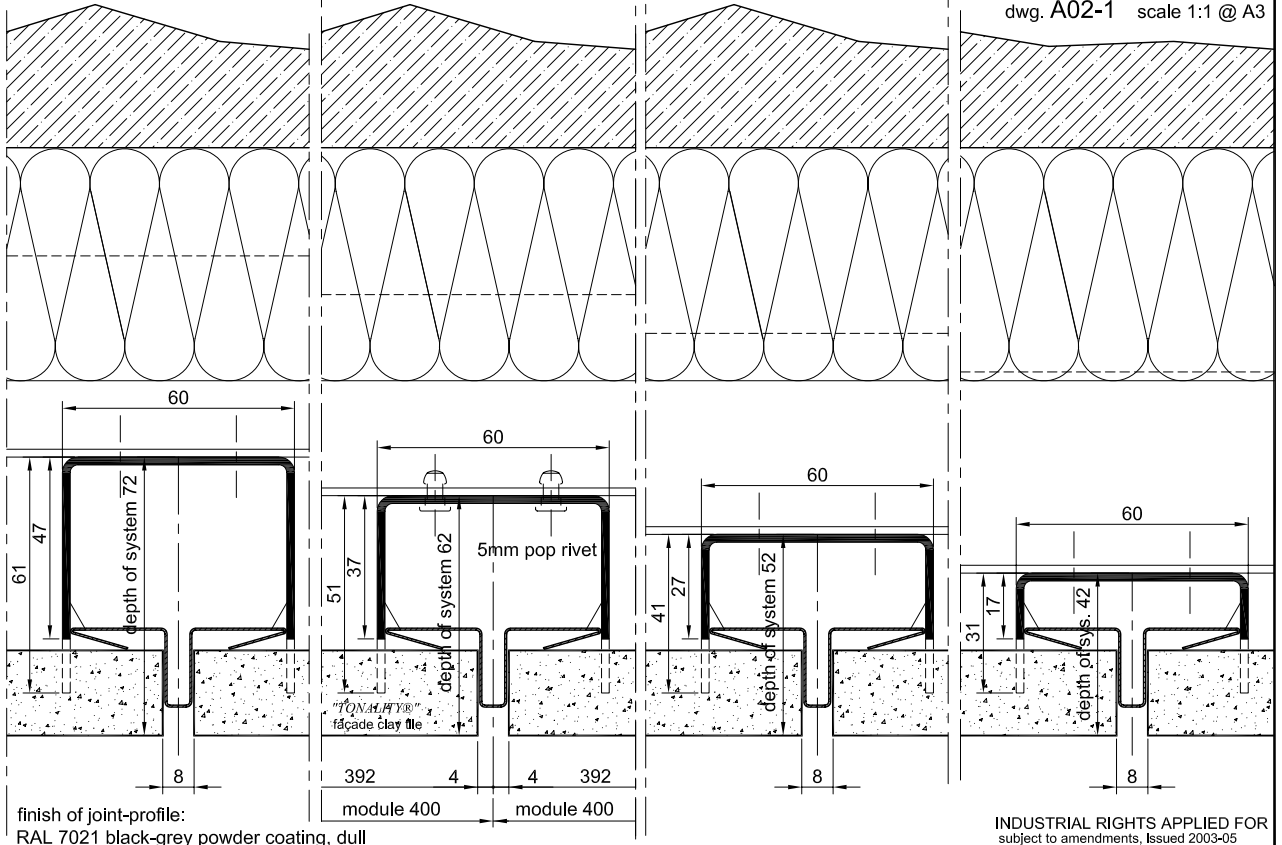
same span stiffness of profile as extruded profile (see Classic profile system)

Same system depth as extruded profile (Classic profile system). Thus the standard profiles e.g. corner-, end-profile will fit.



"TONALITY®"- clay tile façade standard vertical-profiles for Adaptivsystem, with different system-depths

dwg. A02-1 scale 1:1 @ A3



Standard depth of teeth-profile

same span stiffness of profile as extruded profile (see Classic profile system)

Same system depth as extruded profile (Classic profile system). Thus the standard profiles e.g. corner-, end-profile will fit.



"TONALITY®"- clay tile façade standard vertical-profiles for Adaptivsystem, with different system-depths

dwg. A02-2 scale 1:1 @ A3

