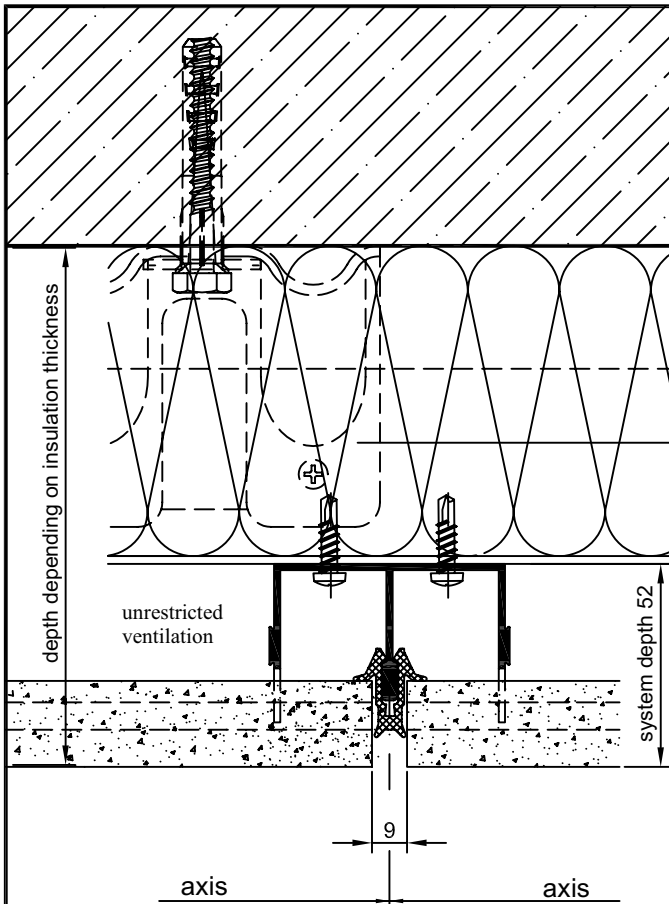


“TONALITY®”-Clay tile facade
Classic profile system (CLS)
on horizontal sub-construction
System installation

ANo. CLS 300-02h
Scale: 1:1 with DIN A3

**CLS can also be installed
on horizontal primary
sub-construction.**

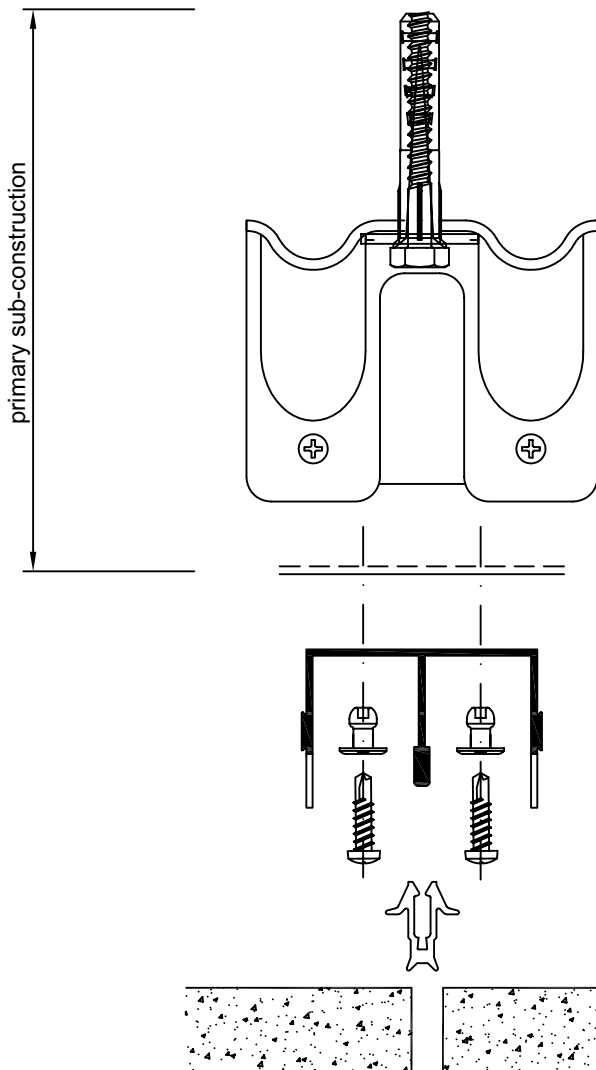


Primary sub-construction
(performed by installer)

Tile length =
Axis measurement – 2 x 3.5 – 2 x 1.0 mm

Example: Axis measurement = 450 mm
Tile length = 450 - 2 x 3.5 – 2 x 1.0 = 441 mm

Note:
Tiles must be installed free of constraint
forces between the profiles.



Primary sub-construction:
Distances, kinds of brackets and plugs,
as well as of rivets resp. drilling screws
subject to structural calculation for the
respective building project !
Performed by installer

Wall bracket and plug
Performed by installer

Al L-profile
Performed by installer

“TONALITY”-Classic vertical profile

Rivet / drilling screw
Performed by installer

“TONALITY”-Classic joint profile

“TONALITY”-Cladding tile

**System installation
with horizontal sub-construction**