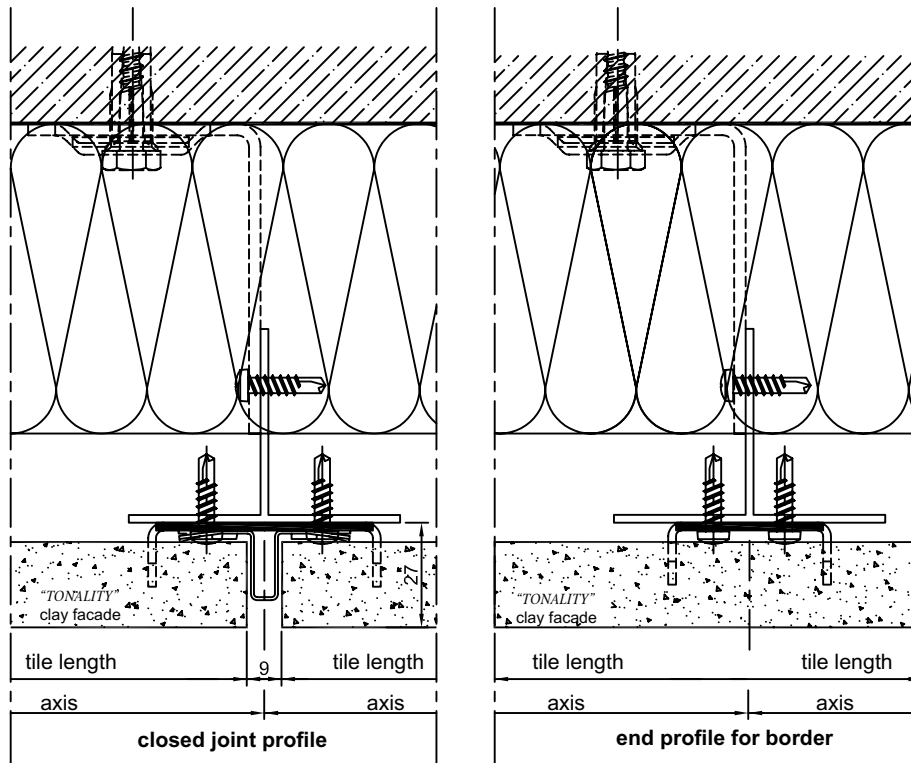
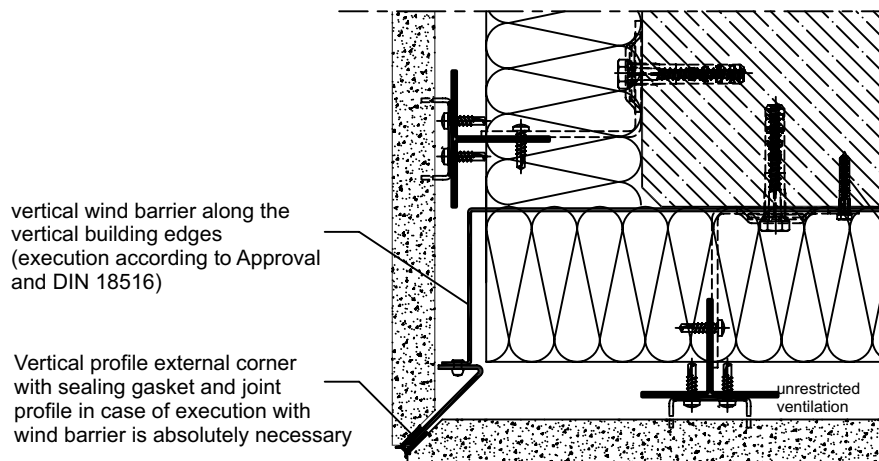


ANo. BAS 200-07  
Scale: 1:1 DIN A3 format



**Illustration of joint profiles**

ANo. BAS 200-08  
Scale: 1:1 DIN A3 format



Plug fastening every 60 cm  
Edge distance according to plug approval

In the event that the following pre-conditions are complied with, it is possible to do without the adding of increased wind loads at the edges of the building according to DIN 18516-1:1999-12 Section 5.1.2.2. It is thus possible to calculate with the wider spans of the respective normal building area in the peripheral building area according to the Approval:

- flow resistance and relative permeability to wind according to Approval
- fitting of a vertical wind barrier along the vertical building edges according to instructions of the Approval

It is not necessary to use wind barriers, if the applicable and valid maximum spans according to the Approval are observed in the peripheral areas. In this context, see the below example taken from the Approval:

Height above basement	0 - 8 m		8 - 20 m		20 - 100 m		> 100 m	
	central area	peripheral area	central area	peripheral area	central area	peripheral area	central area	peripheral area
Admissible width for tiles 250 mm	1,10m	0,83m	1,10m	0,52m	1,07m	0,38m	0,91m	0,32m

**Wind barrier**